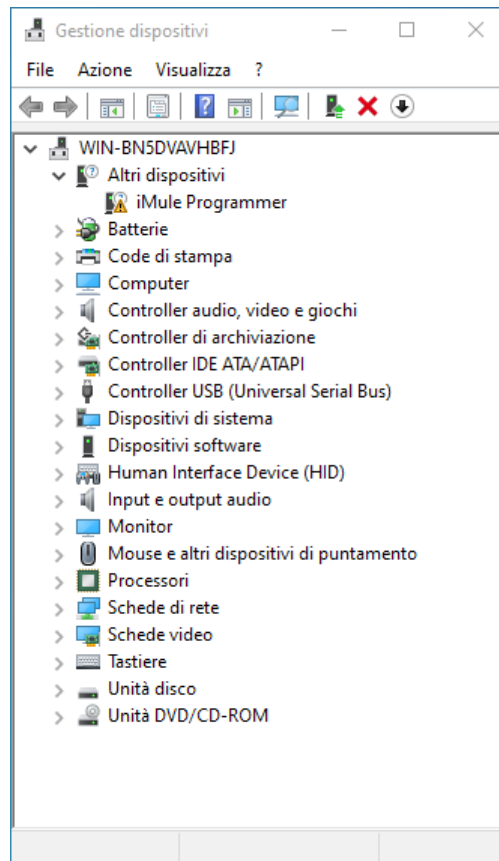


Installazione di iMULE PROGRAMMER Driver

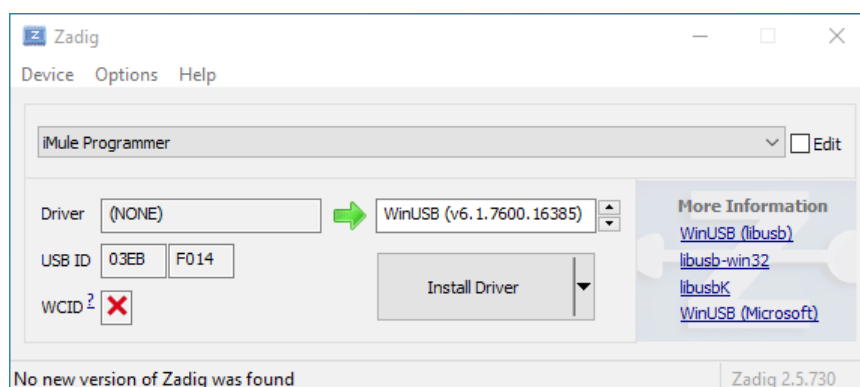
How to Install iMULE PROGRAMMER Driver

- Collegare alla porta USB iMule Programmer. Attendere che il sistema operativo completi la configurazione della porta.
- *Connect iMule Programmer with USB cable. Wait until operating system complete the configuration.*

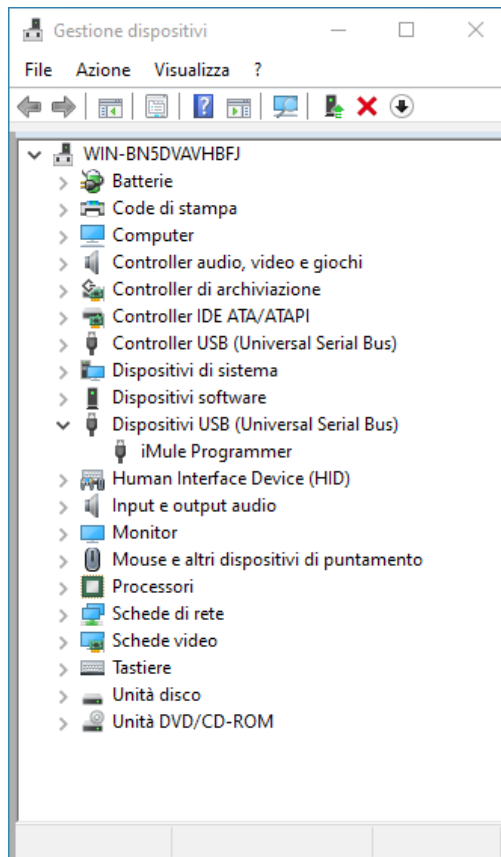


- Eseguire con i diritti di amministratore il software Zadig-2.5.exe
- *Run as administrator Zadig-2.5.exe*

- Selezionare dal menù a tendina “iMule Programmer”
- *Choose from drop down menu “iMule Programmer”*



- Se non compare in elenco, cliccare su Options e selezionare List All Devices
- *If isn't present in the list, click on Options and check List All Devices*
- Assicurarsi che il driver selezionato sia WinUSB a cliccare sul tasto Install Driver. Attendere il completamento dell'operazione
- *Make sure that WinUSB is selected, then press Install Driver button. Wait for complete operation*



Tsec Engineering Srl

Copyright 2020 – All rights reserved